

# Installing UK's Student Version of Matlab

## QUICK OVERVIEW:

To download UK's student version of Matlab, you will first log into the Campus download site and complete a brief form. After completing the form, an activation code will be sent to your [LinkBlueID@uky.edu](mailto:LinkBlueID@uky.edu) email address. Using your [LinkBlueID@uky.edu](mailto:LinkBlueID@uky.edu) address and the activation code, you will then create an account on the Mathworks.com site and download Matlab. Finally, you will install Matlab on your computer.

## STEP 1: Complete form and obtain your activation code

Open a web browser and go to: <http://download.uky.edu>

Login using your Linkblue ID and password.

After you log in, you will see a search box just below the menus. Click on the search field, and type "matlab" (without the quotes). A drop-down dialog should appear. Click on this dialog, and you'll be taken to the Matlab page.



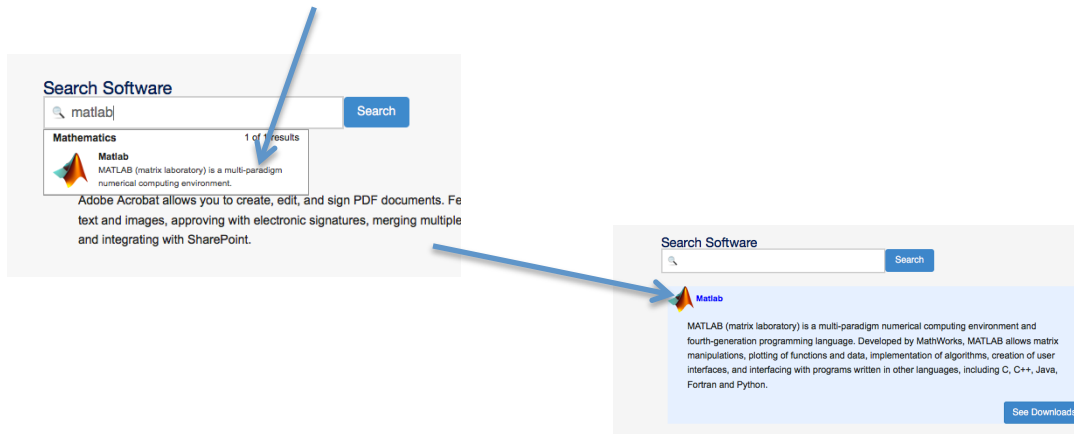
UK SOFTWARE  
DOWNLOADS

LinkBlueID  
\*\*\*\*\*

If you experience network issues, please contact the UKAT Service Desk at 859-218-4327.

Login

Trouble Accessing your Account?



Search Software

matlab Search

1 of 1 results

Mathematics

Matlab  
MATLAB (matrix laboratory) is a multi-paradigm numerical computing environment.

Adobe Acrobat allows you to create, edit, and sign PDF documents. Fe text and images, approving with electronic signatures, merging multiple and integrating with SharePoint.

Search Software

Matlab

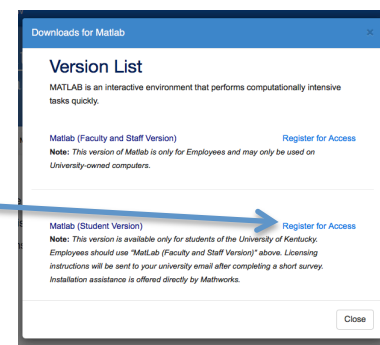
MATLAB (matrix laboratory) is a multi-paradigm numerical computing environment and fourth-generation programming language. Developed by MathWorks, MATLAB allows matrix manipulations, plotting of functions and data, implementation of algorithms, creation of user interfaces, and interfacing with programs written in other languages, including C, C++, Java, Fortran and Python.

See Downloads

Click on "See Downloads" and a pop-up dialog will appear showing which versions are available for download.

You will want to download the "Matlab (Student Version)", so click on the "Register for Access" link next to that title.

You will now be taken to a form that you must complete before receiving the activation code.



Downloads for Matlab

Version List

MATLAB is an interactive environment that performs computationally intensive tasks quickly.

Matlab (Faculty and Staff Version) Register for Access

Note: This version of Matlab is only for Employees and may only be used on University-owned computers.

Matlab (Student Version) Register for Access

Note: This version is available only for students of the University of Kentucky. Employees should use "Matlab (Faculty and Staff Version)" above. Licensing instructions will be sent to your university email after completing a short survey. Installation assistance is offered directly by Mathworks.

Close

**STEP 1: Complete form and obtain your activation code** (continued)

Complete the form by answering all of the questions, then click on the right arrow at the bottom of each screen. You will need to provide your name, your LinkBlueID, what type of computer you're installing the software on (Mac or Windows), and agree to the terms and conditions.

UK  
UNIVERSITY OF  
KENTUCKY

You will receive licensing information for your software after answering some brief questions that are essential to maintaining our software licenses. Thank you.

First Name:

Last Name:

Which option best represents your status at the University of Kentucky? (Please note that this student license is only available to current students of the University of Kentucky.)

☐ Student  
☐ Faculty  
☐ Staff  
☐ None of the Above

Next

UK  
UNIVERSITY OF  
KENTUCKY

What is your linkblue username? (Same as the username commonly used after .edu or .mdu)

Your LinkBlueID

Previous Next

Survey Powered By Qualtrics

UK  
UNIVERSITY OF  
KENTUCKY

Is LinkBlueID@uky.edu your email address? (Note: YourLinkBlueID@uky.edu will send email to your UK email address regardless of your customized email, ex: jdoe@uky.edu and jdoe@uky.edu both send email successfully.) If you entered your linkblue incorrectly, please change your response to the previous question, by clicking on the back button located below. We will send the license code or file to this email address.

☒ Yes

Previous Next

Survey Powered By Qualtrics

UK  
UNIVERSITY OF  
KENTUCKY

Will you be installing this software on a windows or mac operating system?

☒ Windows  
☐ Mac

Is this software being installed on a machine owned by the University of Kentucky?

☐ Yes  
☒ No

As a University of Kentucky registered Matlab user, you will receive license renewal and software update notifications on a yearly basis. In addition, would you like to be contacted regarding upcoming seminars and new training resources?

☐ Yes  
☒ No

I, the undersigned, acknowledge that the MatLab software packages are proprietary to The Mathworks and agree to abide by the following conditions for its use.

1. All copies of the software shall remain the property of The Mathworks.
2. The copy of the software that I use is for my exclusive use only. I will not copy the software and will not allow access to the software by others.
3. I will not install or otherwise disable any feature of the Licensed Program, by modification of the Licensed Program or otherwise, which prints out or otherwise displays notices of proprietary rights in, or ownership of the Licensed Program by any of the above named parties.
4. I agree to use the Software for academic purposes only and I understand that any commercial or profit-making use of the Software is strictly prohibited.
5. If I choose not to renew MatLab for an additional year, or I am no longer an employee of the university, I will delete the software from my computer system.
6. If I violate the terms of this agreement, the University of Kentucky has the right to take disciplinary action against me and The Mathworks has the right to take legal action against me.

☐ I agree to all of the terms and conditions stated above.  
☐ I disagree to any of the terms and conditions stated above.

Next

Survey Powered By Qualtrics

UK  
UNIVERSITY OF  
KENTUCKY

Thank you for completing the registration for use of the University of Kentucky Matlab site license. If qualified, you will receive an email within an hour from a representative of the University of Kentucky containing the license file.

Survey Powered By Qualtrics

**Retrieve your activation code**

Shortly after you complete the form, your activation code will be emailed to your [LinkBlueID@uky.edu](mailto:LinkBlueID@uky.edu) address.

Check the account that you set this address to forward to.

If you have created both an @g.uky.edu address, and a UK Office365 email address, the activation codes will likely be delivered to your Office365 account, even if that's not your primary account. Check your Junk, Clutter, and trash if you do not see the email in your inbox.

**Activation Code**

MatLab Student License

noreply@gmailserver.com  
Today 8:17 AM

Dear Student,

Thank you for filling out the MatLab online registration request. You have been approved for a Student MatLab license for the 2016-2017 school year. You can now use the latest versions of MatLab and Simulink.

**Obtaining MatLab**

Please visit [Mathworks](https://www.mathworks.com) and create a free account using <your link blue ID>@uky.edu as your email address. After creating your account, you will then associate the following license code to your account:

12345-67890-12345-09876-12345

After you have entered this code, you will now be able to download the latest release of MatLab to your personal computer.

**Getting Started**

To get started, you can go to the TAH Resource Kit, which offers a comprehensive collection of resources. You can find video tutorials, classroom materials, webinars, and more.

Thank you,

University of Kentucky Analytics and Technologies  
Service Desk  
859-218-HELP (4357)

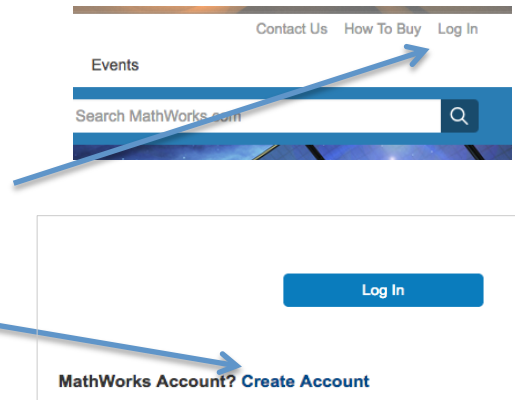
**STEP 2: Create Mathworks.com account and download installer**

Return to your browser window, and go to:

<http://www.mathworks.com>

When the site loads, click on “Log In” in the upper right-hand corner.

On the Log In screen, click “Create Account”.

**Create account and verify email address:**

On the “Create MathWorks Account” screen, enter your uky.edu email address. You must use your uky.edu email address to download the software.

Pick your country, pick “Student use” for usage type, verify that you are over 13 years old, and click “Create”.

You should then see a page telling you to “Verify your email address”. Without closing the MathWorks.com window, go to your email account, and click on the link in the email from MathWorks.com.

 This is a screenshot of the 'Create MathWorks Account' form. It has a header with the MathWorks logo and navigation links. The form fields include: 'Email Address' with the value 'Link&BlueID@uky.edu' and a green checkmark; 'Country/Region' with a dropdown menu showing 'United States'; 'How will you use MathWorks software?' with a dropdown menu showing 'Student use'; and 'Are you at least 13 years or older?' with radio buttons for 'Yes' (selected) and 'No'. There are 'Cancel' and 'Create' buttons at the bottom. A blue arrow points from the 'Create' button to the 'Verify your email address' page.


 This is a screenshot of the 'Verify your email address' page. It has a header with the MathWorks logo and navigation links. The page content includes: 'Verify your email address' followed by instructions: '1. Go to your inbox for Link&BlueID@uky.edu' and '2. Click the link in the email we sent you.' Below this is a section 'Didn't get the email?' with instructions: '1. Check your spam folder.', '2. Send me the email again.', and '3. For additional assistance, see Email Verification or contact Customer Support.'

After you verify your email address, you will finally be able to complete your MathWorks profile and associate the activation code with your account.

STEP 2: Create Mathworks.com account and download installer (continued)Complete profile:

You should now see the profile form. Complete the form by filling in your name, a UserID, and password for your MathWorks.com account.

Next, you'll need to identify which University you're associated with.

Finally, either copy and paste or type the **Activation Key** from your email into the field on this form.

Click "Create" to finish creating your account.

You should now see the "My Software" page in your browser. You can now download your software by clicking on the down pointing arrow.

ucts Solutions Academia Support Community Events

Search MathWorks.com

To finish creating your profile, provide the following information for LinkBlueID@uky.edu

First Name

Last Name

User ID (Optional)

Must include 6 to 16 alphanumeric characters and start with a letter (Example: jsmith555) [Learn more](#)

Password

Must be at least 8 characters, with at least one upper-case and one number

Password Confirmation

Location of your School/University

Please provide the following information in English.

Country/Region of School/University

State/Province of School/University

School / University

Associate Your Account to a License

If you have MATLAB already, enter your activation key or license number here. [What will this allow me to do?](#)

Activation Key or License Number (Optional)

Type 'license' at the MATLAB prompt to get your license number or get an activation key from your MATLAB administrator.

Create

We will not sell or rent your personal contact information. See our [privacy policy](#) for details.

MathWorks® Products Solutions Academia Support Community Events

MathWorks Account Search MathWorks.com

My Account Profile Quotes Orders Community Profile

✓ Your profile was created and associated to your license

YOUR NAME (LinkBlueID)

Service Requests Run Reports

My Software

License	Label	Option	Use
1234567	Univ of Ky TAH Student License	Total Headcount	Academic Student

Associate to an additional license

Get a trial

**STEP 2: Create Mathworks.com account and download installer (continued)**

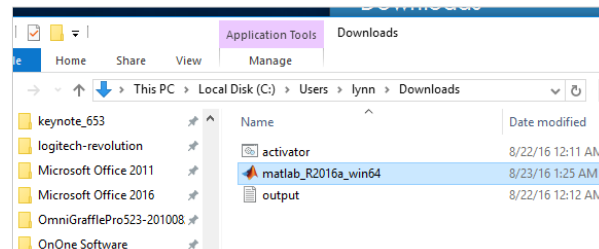
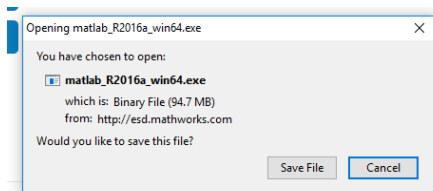
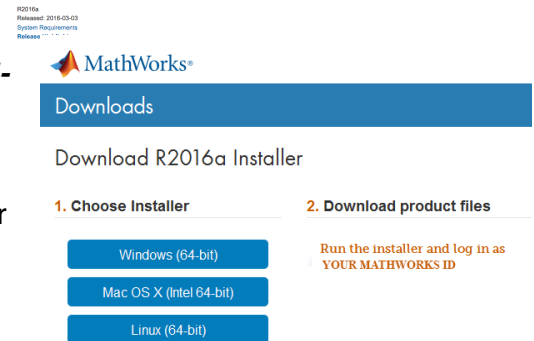
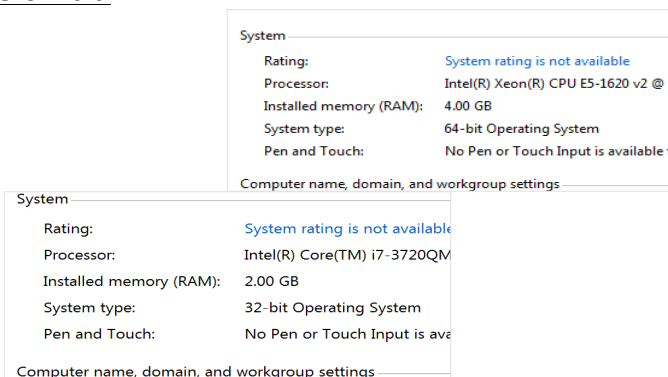
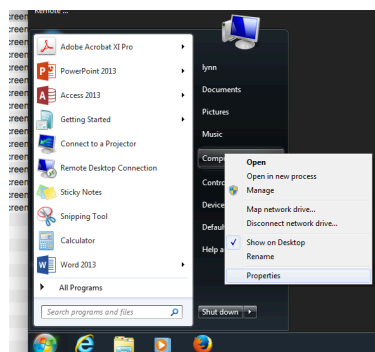
**NOTE:** This step downloads the installer that you will use to download and install Matlab in STEP 3.

**Download the installer:**

Clicking the download arrow in the previous step brings up the download screen shown on the right.

Different versions of Matlab are available, **but starting with version R2016a, newer versions will only support 64-bit operating systems**. For complete information on what different versions support, check out the **System Requirements** link on that version's page. Questions about using a particular version in a class should be directed to your instructor or TA. If you are uncertain whether your operating system is 32-bit or 64-bit, please refer to the section below.

Once you've determined which version to install, click the large blue download button and save the file to your hard drive. Unless you've configured your browser to allow you to choose where files are downloaded, the Matlab installer will probably be in your **Downloads** folder.

**Determining if your operating system is 64-bit:**

**Windows 7:** Click on the start button to bring up the start menu, then right-click on *Computer* and pick *properties*. The *Basic Information* screen will display, and your OS version will be shown under the *System* section -> *System type*.

**Windows 10:** Right-click on the start button, and pick *System*. The *Basic Information* screen will appear, and your OS version can be found under the *System* section.

**MacOS X:** MacOS X 10.8 and above is only available in 64-bit.

### STEP 3: Install Matlab

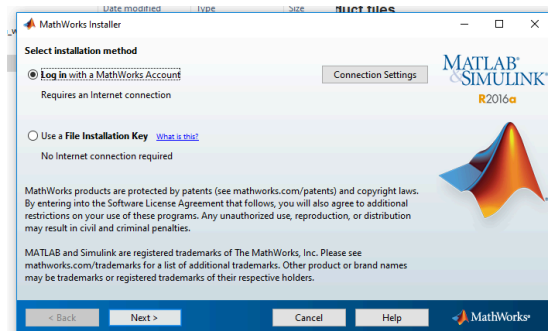
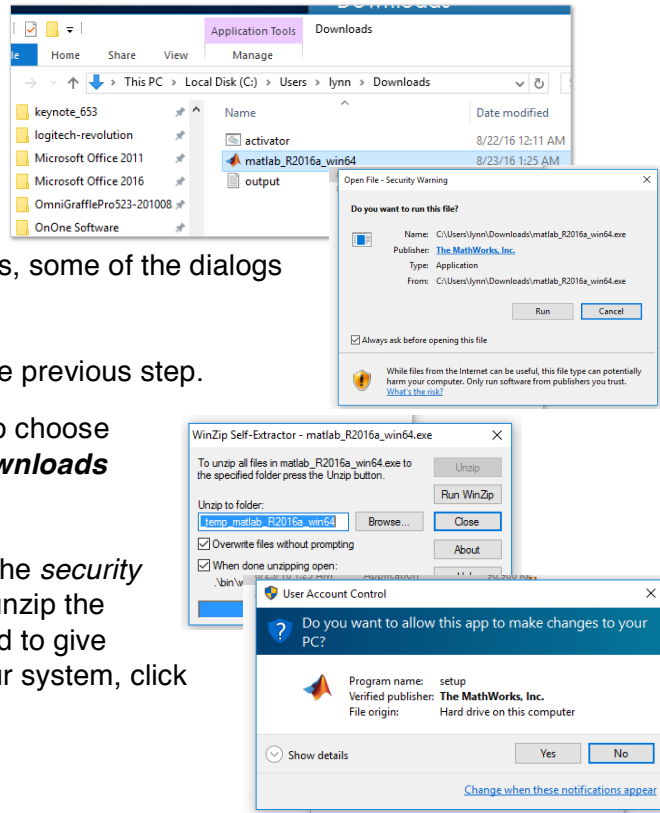
**NOTE:** Before you perform this step, you probably want to make certain you have a decent network connection. The Matlab download is about 2.7 GB.

The following instructions were prepared using Windows 10. Depending on your system settings, some of the dialogs may be slightly different.

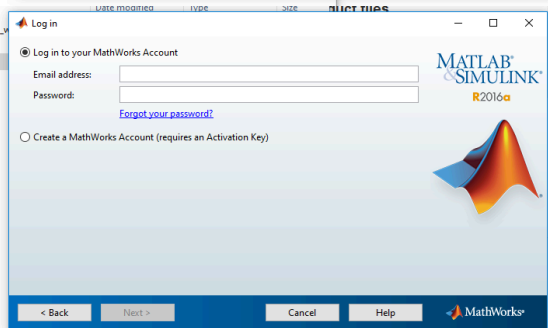
Locate the Matlab installer you downloaded in the previous step.

Unless you have your browser set to allow you to choose where to download files, it's probably in your **downloads** folder.

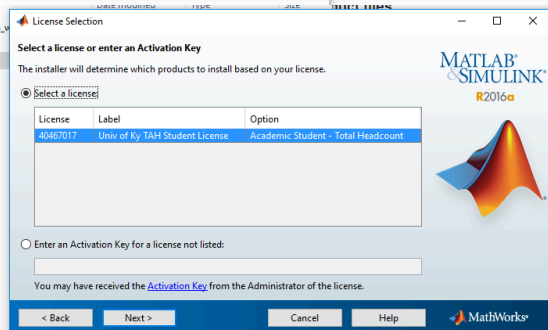
Double-click on the installer, and when you see the **security warning**, click **Run**. The self-extractor will then unzip the installer files and run the **setup** program. If asked to give this program permission to make changes to your system, click **Yes**.



The MathWorks install will start, and ask you to pick an installation method. Choose **Log in with a MathWorks Account** and click **Next**.



You will then be asked to agree to license terms (dialog not shown). Pick **Yes** and click **Next**.



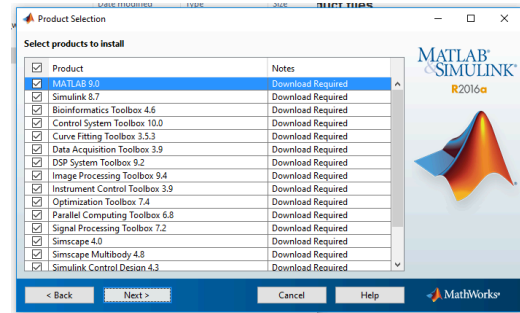
When the next dialog box appears, pick **Log in to your MathWorks account**. Enter the email address and password you used when you created your MathWorks account and Click **Next**.

The next screen should show you the license you associated with your account previously. Make certain **Select a License** is picked and the license is highlighted, then click **Next**.

**STEP 3: Install Matlab** (continued)

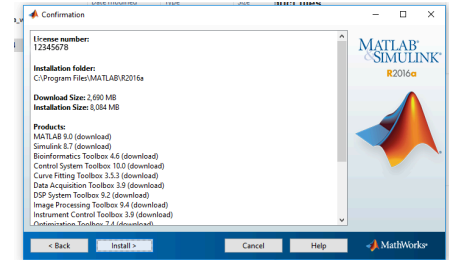
The next screen (not shown) will ask you to choose an installation folder for Matlab. Unless you have a strong preference, just click **Next** to use the default location.

You will now see a dialog that allows you to choose which Matlab components to install. Make certain all of the components are checked and then click **Next**.

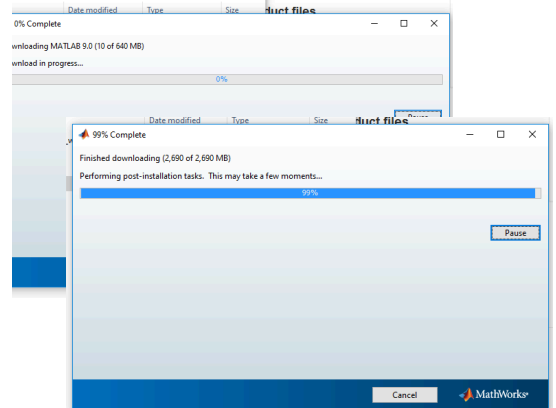


You will now be asked to choose which Matlab icons are created (dialog not shown). Click **Next**.

The next screen shows what components will be installed. If this list is correct, click **Install** to begin the install.

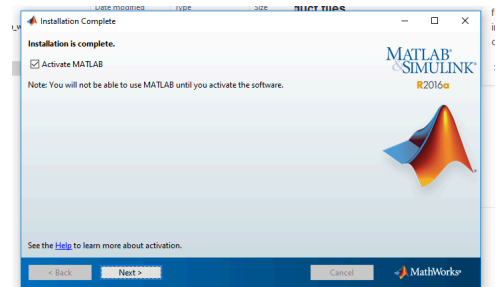


The installer will now display a progress dialog, listing the component currently being downloaded or installed. This will take awhile, since the total download is approximately 2.7 GB.



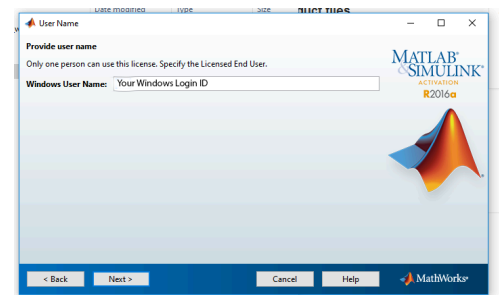
Once the install has completed, you will be asked to activate Matlab.

When the activation dialog appears, make certain that **Activate MATLAB** is checked, then click **Next**.



The next screen (not shown) explains what activation is. Click **Next**.

Matlab now needs you to confirm your userID on the computer you're installing the software on. The userID field should populate itself, but if not, please enter it now. Click **Next**.





**STEP 3: Install Matlab** (continued)

Finally, you'll be asked to confirm your MathWorks userID, and your userID on the computer you're installing the software on.

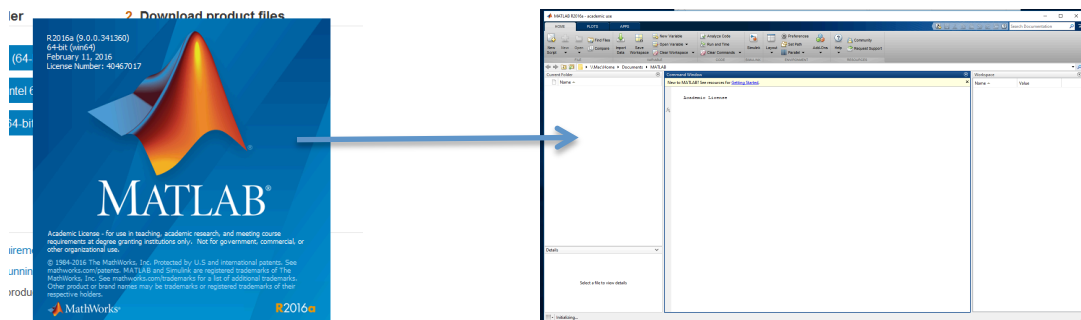
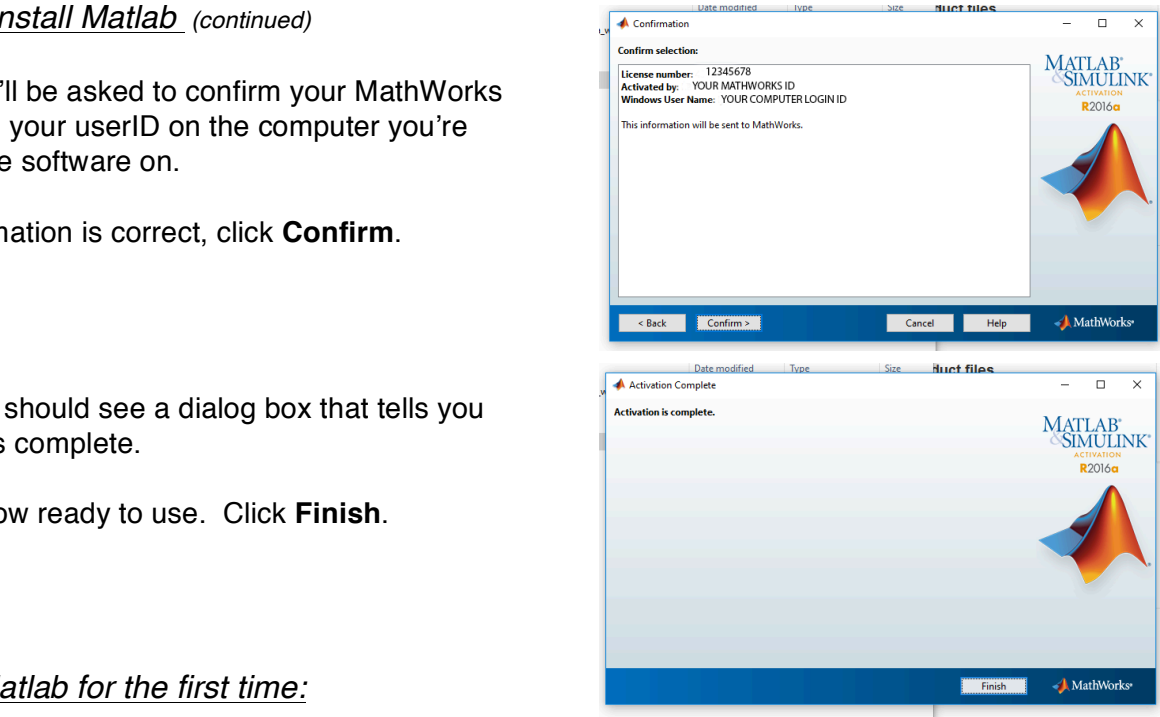
If this information is correct, click **Confirm**.

Shortly you should see a dialog box that tells you Activation is complete.

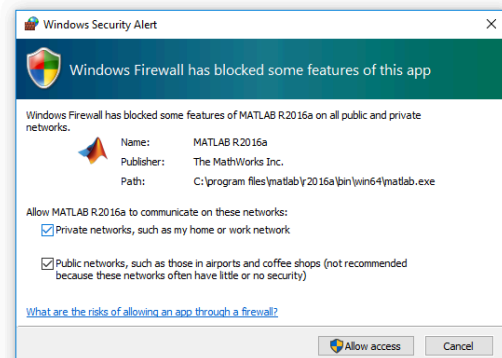
Matlab is now ready to use. Click **Finish**.

**Starting Matlab for the first time:**

Confirm that Matlab is working by clicking the start button, find Matlab in the menu, and click on the icon. It will take several seconds to start, but you will see the initial splash screen and then the application window.

**Windows firewall message:**

If you receive a warning message stating that some features may be blocked by Windows Firewall, make certain both check boxes are checked – *Private networks and Public networks* and click **Allow access**.

**Further installation assistance:**

If you require further assistance installing Matlab, please contact MathWorks' support at: (508) 647-7000.

Installation assistance website is: <http://www.mathworks.com/support/install-matlab.html>