

Student Organization Exhibitors

| NAME | ROOM | BUILDING | NAME | ROOM | BUILDING |
|--|-------------------|----------|----------------------------------|----------------|----------|
| AAPS | 1st Floor | FPAT | IAESTE | Commons | RGAN |
| ACM/UPE Information Table | 103 | RGAN | ISPE | 1st Floor Hall | FPAT |
| AIAA Information Table | Basement | OHR | KSPE Information Table | 1st Floor | OHR |
| ASBAE Quarter Scale Tractor | Courtyard | RGAN | NSBE Information Table | Commons | RGAN |
| ASBAE Information Table | 263 | FPAT | Phi Sigma Rho Information Table | 1st Floor | OHR |
| ASCE Concrete Canoe Exhibit | Basement hallway | OHR | SAE Information Table | 1st Floor | OHR |
| ASCE Information Table | 1st Floor | OHR | SME (Mining) Information Table | 255 | FPAT |
| ASME Information Table | Basement | RGAN | Solar Car | Courtyard | RGAN |
| BMES Information Table | 253 | FPAT | SWE Information Table | Commons | RGAN |
| Engineers Without Borders | Commons | RGAN | SWE Bowl | 320 | RMB |
| ESC Sweatshirts for Sale and Information Table | Commons | RGAN | Tau Beta Pi Lego League Robotics | 209 | RMB |
| Future City 2nd place winner (KSPE) | 1st floor hallway | OHR | Tau Beta Pi Information Table | 209 | RMB |
| | | | UKITE | 112 | OHR |

Corporate and External Organization Exhibitors

| COMPANY/ORGANIZATION NAME | ROOM | BUILDING | COMPANY/ORGANIZATION NAME | ROOM | BUILDING |
|--|-------------------|------------|--|----------------------------------|----------|
| Air Force ROTC | | Gillis Lot | H. W. Lochner | 2nd Floor Hallway | OHR |
| Alliance Coal, LLC / Matrix Design Group, LLC | 255 | FPAT | In2Lex | 2nd Floor | RMB |
| American Society of Civil Engineers | 1st Floor Hallway | OHR | Kaba Mas, LLC | 2nd Floor Hallway | OHR |
| ASHRAE Am. Society of Heating, Refrig., and Air Cond. Engrs. | 203 | RGAN | Kentucky American Water | 203 | RGAN |
| Asphalt Institute | 2nd Floor Hallway | OHR | Kentucky Transportation Cabinet | 265 & 267 | FPAT |
| Association of State Dam Safety Officials | 207 | RGAN | KY Coal Foundation | 255 | FPAT |
| Banner Engineering | 2nd Floor Hallway | OHR | Lexington Convention and Visitors Bureau | 2nd Floor Hallway | OHR |
| Belcan | 203 | RGAN | Lexmark | 257 | FPAT |
| Big Ass Fans | 203 | RGAN | LFUCG, Div. of Traffic Engineering | 112 | OHR |
| Bluegrass Society of Hispanic Professional Engineers | 57 | OHR | MacAdam Student Observatory | 2nd Floor Hallway | OHR |
| Bluegrass Society of Women Engineers | 57 | OHR | Marathon Petroleum | 203 | RGAN |
| CMTA Engineering Consultants | 2nd Floor Hallway | OHR | Mason & Hanger Group | 2nd Floor Hallway | OHR |
| Cummins Inc. | Loading Dock | ASTeCC | Newton's Attic | Courtyard or ASTeCC Loading Dock | |
| East KY Power Coop - Bluegrass Energy Coop | 2nd Floor Lobby | RMB | Palmer Engineering | 2nd Floor Hallway | OHR |
| ENTRAN | 2nd Floor hallway | OHR | Sierra Club | 1st Floor Lobby | RMB |
| Explorium | 207 | RGAN | Stantec Consulting Services, Inc. | 2nd Floor Hallway | OHR |
| Gray Construction Co. | 2nd Floor Hallway | OHR | TEREX | 203 | RGAN |
| | | | Trane | 203 | RGAN |

To visit the University of Kentucky campus and explore the College of Engineering on a typical day, go to www.engr.uky.edu/visit. Tours are given on the first Monday of the month and begin at 12:00 p.m.. If you are not able to attend a group tour on Mondays, choose 'other' in the date selection and one of our recruiters will contact you to schedule a one-on-one tour at your convenience. Thanks for your interest in the College of Engineering at the University of Kentucky!

Contests

Each year the UK student chapters of national engineering academic societies volunteer their time and expertise to provide contests that will engage participants in fun events, while also introducing them to basic principles of engineering. Some of the contests are walk-up events, some require pre-registration. All of them award prizes.

| Contest | Location | Organization | Judging Time |
|-----------------------------|-----------------------|---------------------|-------------------------|
| Balloon Racers (W) | 220K RMB | Phi Sigma Rho | On-going |
| Edible Car (W) | 53 OHR | SWE | On-going |
| Egg Drop (P) | Basement OHR | ASCE | 11:30 a.m. |
| Formula LEGO | 1st Floor Hallway OHR | SAE | On-going |
| Ping Pong Ball Launcher (W) | 215E RMB | ASME/PiTau Sigma | On-going |
| Lego Speed Bent (W) | 209 RMB | Tau Beta Pi | On-going |
| Load Out (Coal Loading) (W) | 255 FPAT | SME | On-going |
| Paper Airplane (W) | Basement hallway OHR | AIAA | On-going |
| Popsicle Stick Bridge (P) | 226 OHR | Chi Epsilon | 11:00 a.m. |
| Pringles Mailing (P) | 1st floor hallway OHR | KSPE | 9:30 a.m. |
| Rashing Ring (W) | 59A FPAT | AiChe | On-going |
| Robocode (W +P) | 103 RGAN | ACM | Final battle 12:30 p.m. |
| Rube Goldberg (P) | 323 RMB | Alumni Association | 12:00 Noon |
| Spaghetti Gumdrop Tower (W) | 62 OHR | ASCE | On-going |
| Triangle Tower (W) | 2nd floor lobby RMB | Triangle Fraternity | On-going |
| Volcano (P) | 59A FPAT | AiChe | 10:00 a.m. |
| NSBE Tower (W) | Commons RGAN | NSBE | On-going |
| Newspaper Bridge (W) | 54 Raymond | ITE | On-going |

W = Walk up contest, P = pre-registration required to participate in this contest

**E-Day Headquarters, Emergency Center, Lost and Found
(859) 257-4856 - 161, OHR**

Registration/sign up for door prizes 1st Floor, OHR
Registration/sign up for door prizes, Commons, RGAN
Registration/sign up for door prizes, Lobby, FPAT
Registration/sign up for door prizes, Lobby, RMB

To see the prize winner's names and event photos from Eday 2010 visit www.engr.uky.edu/eday



Welcome to Engineers Day 2010



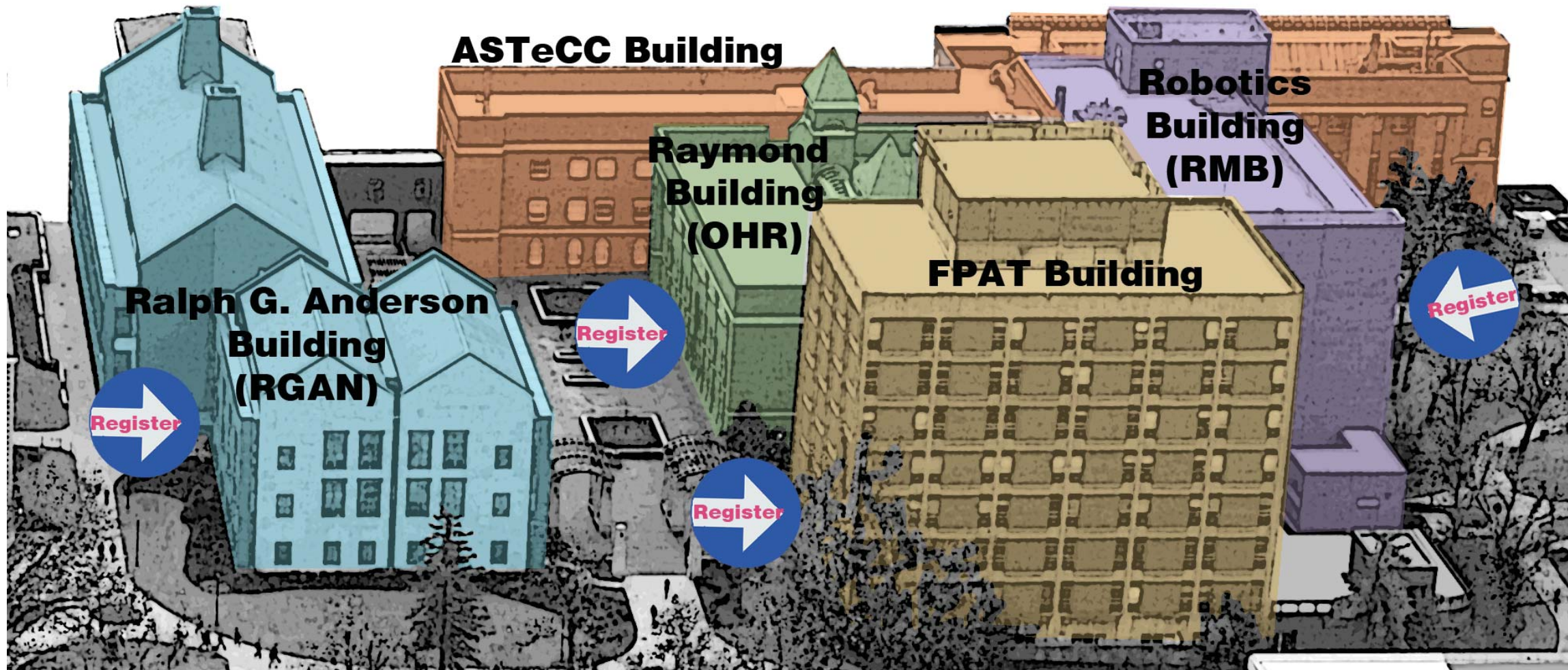
We're glad you're here to help us celebrate National Engineers Week. Engineers are the world's problem solvers, and today you'll be able to learn what engineers do and how they do it. While you're learning, you'll have fun participating in contests, winning prizes, watching experiments and demonstrations, and talking to engineers about their work.

**Enter to win door prizes and a \$4,000 Scholarship*
Entry boxes are located at registration tables**

*The winner will be chosen from a random drawing of all registration forms received from current high school students attending Engineers Day 2010. (One registration form per person; current UK employees and their immediate families are not eligible.) To receive the scholarship, student must be admitted to the College of Engineering at the University of Kentucky and remain in good standing. Winning student will receive \$1000 per year for tuition which will be applied to the student's account annually for 4 years, for a total scholarship award of \$4000.



Engineering Quadrangle Complex

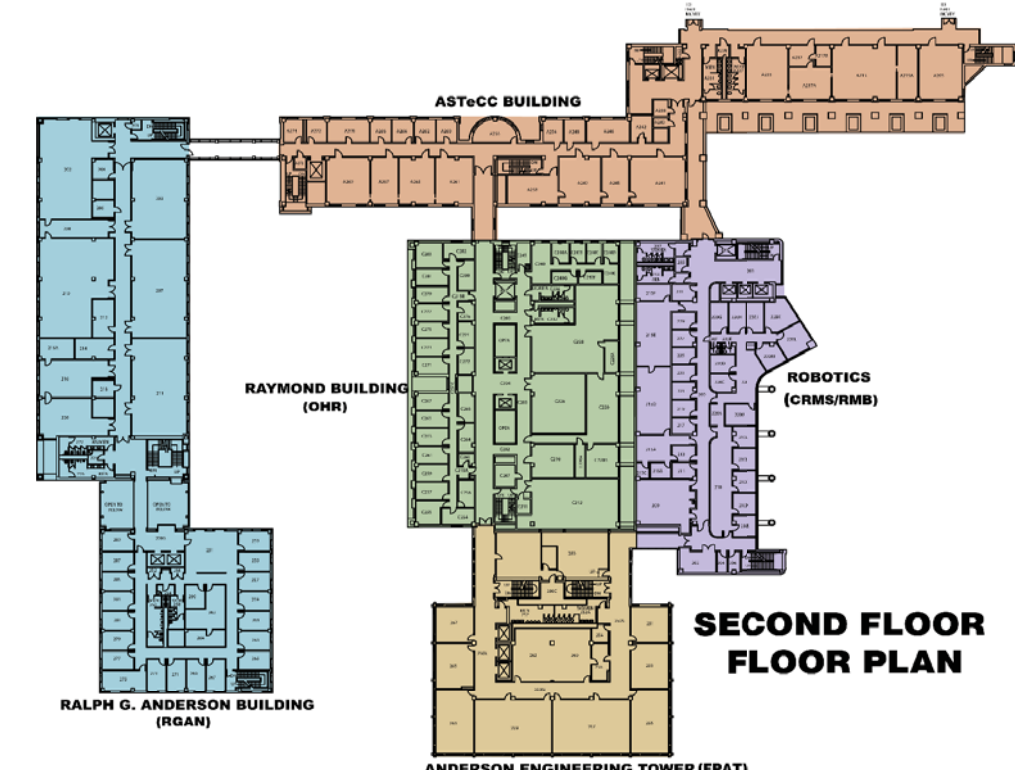
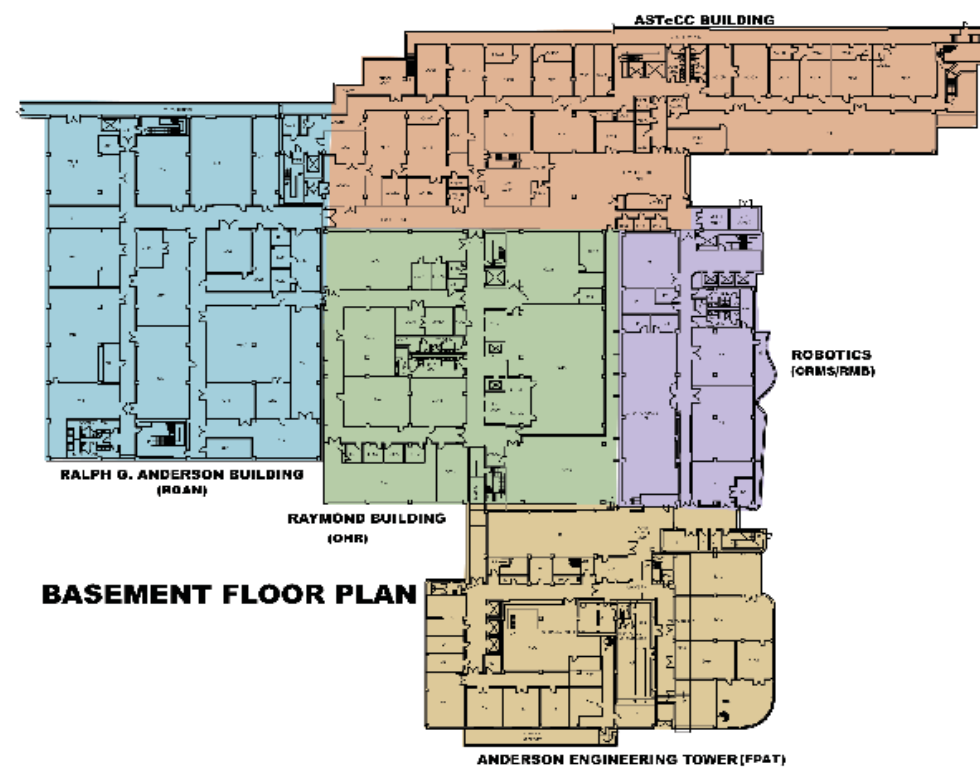
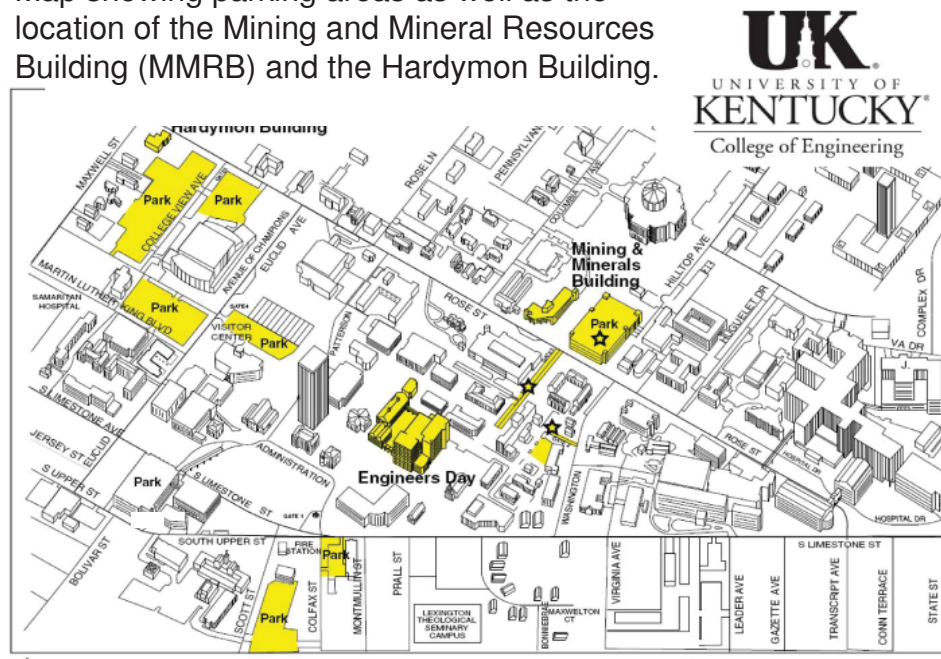


Color key for Central Campus Engineering Complex Buildings:

| |
|---|
| F. Paul Anderson Tower (FPAT) |
| Advanced Science and Technology Commercialization Center (ASTeCC) |
| UK Center for Manufacturing/Robotics Building (CRMS/RMB) |
| Ralph G. Anderson (RGAN) |
| Oliver H. Raymond (OHR/Raymond) |
| Mining and Minerals Resources Building (MMRB) |

Many of the Eday events will take place on either the basement level or the second floor of the central campus engineering complex. To help you find your way around, the buildings have been color-coded and floor plan maps provided. If you need more help, go to any registration table and ask for information.

Map showing parking areas as well as the location of the Mining and Mineral Resources Building (MMRB) and the Hardyman Building.



Schedule of Events

| EVENT NAME | ROOM | Building | EVENT NAME | ROOM | Building |
|---|-------------------|----------|--|----------------------------------|----------|
| 3D Scanning | 455 | FPAT | Impactor | 67 | FPAT |
| Acoustic Modeling of Diesel Particulate Filters | 202 | RGAN | Industry Problem Solving | 202 | RGAN |
| Alternative Energy | 202 | RGAN | Infrared Camera | 112 | OHR |
| Amazing Materials: Engineering Our Material World | 1st Floor Hallway | FPAT | Infrared Thermal Measurements | 9 | RMB |
| Anechoic Test Cell | 6 | RGAN | Ingels Dorm Tour (Leave at 10:30) | Commons | RGAN |
| ASBAE Information Table | 263 | RGAN | KTC Library and Shaver Engineering Library—Engineering info/resources | 3rd Floor | FPAT |
| Automated Incident Recording System (AIRS) video | 112 | OHR | KySAT Laboratory | 571 | FPAT |
| Balloon Giveaway | 263 | FPAT | KySAT Satellite Earth Station | 553 | FPAT |
| Balloon Giveaway | 1st Floor Lobby | RMB | Laser Materials Processing Lab | 119 | RMB |
| Biomaterials | 253 | FPAT | Lean Systems Lab | 12 | RMB |
| Bone Mechanobiology/Biomechanics | 253 | FPAT | Lost and Found | 161 | OHR |
| Can Water Run Through Concrete? | 263 | FPAT | Machining Research – Poster Presentation of Active Projects | 9 | RMB |
| Cardiac Rhythms | 253 | FPAT | Materials Camp: Adventures in Material Sciences | 1st floor hallway | FPAT |
| Cardiovascular Bioinstrumentation | 253 | FPAT | ME Senior Capstone Project Posters | 202 | RGAN |
| Career Services | Commons | RGAN | Measuring Strain | 255 | FPAT |
| CBME-Related | 253 | FPAT | Mechanical Engineering Program Information | 2nd Floor Hallway | RGAN |
| CeNSE - Center for Nanoscale Science & Engineering (tours of lab and posters) | 349 | ASTeCC | Mine Design Lab Demonstrations | 248 | MMRB |
| CeNSE - Center for Nanoscale Science & Engineering (tours of lab and posters) | 365 | ASTeCC | Mine Roof Support Demonstrations | 255 | FPAT |
| CeNSE - Center for Nanoscale Science & Engineering (tours of lab and posters) | 369 | ASTeCC | Nanoscale Certificate Program Poster | 202 | RGAN |
| Chemical and Materials Engineering Department Information Table | 1st Floor Lobby | FPAT | Near-Dry and Cryogenics Machining Demonstrations | 9 | RMB |
| Chemical Engineering: The Frontiers of Science | Basement Hallway | FPAT | Neural Engineering | 253 | FPAT |
| Composite Materials Display - Plastic Bridges and more | 112 | OHR | Optical Profilometry Demonstration | 14 | RGAN |
| Computational Electromagnetics | 682 | FPAT | Optical Spectroscopy | 253 | FPAT |
| Computer Graphics Demo | 211 | RGAN | Packed Column | 59A | FPAT |
| Computer Science Demos & Presentations | 103 | RGAN | Painting Technology Research | 202 | RGAN |
| Computer Science Information Table | 103 | RGAN | Plan, Design, Build | 112 | OHR |
| Construction Engineering | 112 | OHR | Plastic Structures | 112 | OHR |
| Co-op Program Information Table | Commons | RGAN | Popcorn | Basement Hallway | FPAT |
| Corelok Vacuum Sealer | 112 | OHR | Precision Laser Pointing System | 14 | RGAN |
| Customer Service Center | 2nd floor FPAT | FPAT | Rattle and Hum -- Fun with Digital Audio | 465 | FPAT |
| Design, Build, Fly | 3 | RGAN | Recruitment | Lobby | RGAN |
| Digital Design Lab -- undergraduate | 581 | FPAT | Registration Table | 1st Floor | OHR |
| Dynamic Structures and Controls Lab | 10 | RGAN | Registration Table | Commons | RGAN |
| E. coli detection with fluorescence under UV light | Outside 316 | OHR | Registration Table | Lobby | RMB |
| Earthquake Simulator | 112 | OHR | Registration Table | Lobby | FPAT |
| ECE Main Office - Turn in tour sheets | 453 | FPAT | Robots in Agriculture | 263 | FPAT |
| Emergency Center 257-4856 | 161 | OHR | Share or Not to Share: ensure privacy and security in video sharing applications | 453F | FPAT |
| EDRL - Electronic Devices Research Lab | 361 | ASTeCC | Smart Materials Demonstration | 19 | RGAN |
| EDRL - Electronic Devices Research Lab | 651 | FPAT | Solar Decathlon House | Front Lawn, Administration Drive | |
| Electrical Engineering Information Table | 1st floor lobby | FPAT | Stream Restoration | 263 | FPAT |
| Engineering Pharmaceuticals | 1st floor hallway | FPAT | Supercomputers R Us | 672 | FPAT |
| Excimer Laser Micromachining - Free Laser Marked Pennies | 659 | FPAT | Sustainable Manufacturing Research Program | 9 | RMB |
| Fire Whirl Demo | 312 | RGAN | Sustainable Supply Chain Operation Posters | Basement Hallway | RMB |
| Fluid Flow | 59A | FPAT | Transportation Simulations | 120 | OHR |
| Ground Penetrating Radar (GPR) | 112 | OHR | Vascular Cell Mechanobiology | 253 | FPAT |
| Grow Your Own Energy | 263 | FPAT | Video Microscope | 112 | OHR |
| High Resolution Multi-Touch Screen | 207 | RGAN | Video Presentation of Chip Breaking Process in Machining | 9 | RMB |
| High Speed Motion Analysis of Machining Operations | 9 | RMB | Visual Search Engine | 207 | RGAN |
| How Hot Are You? | 263 | FPAT | Web-Based Machining Optimization (Software Demonstration) | 9 | RMB |
| How is Cotton Candy Made? | 263 | FPAT | Welding Research Laboratory | 119 | RMB |
| Hydrocyclone Demonstrations | 255 | FPAT | Wildcat 1/4 Scale Pulling Tractor | Courtyard | RGAN |
| IEEE Robot Showcase | 467 | FPAT | Writing Initiative/David Shippey book signing/information | Commons | RGAN |
| IEEE Student Branch -- building simple circuits | 473 | FPAT | Writing Initiative/Vis Center Video Project | Commons | RGAN |
| IGERT Engineered Bioactive Interfaces and Devices | 1st floor hallway | FPAT | Writing Initiative/Vis Center Video Project | Lobby | FPAT |